

Jade State News

Wyoming State Mineral & Gem Society, Inc.

Award-Winning WSMGS Website: wsmgs.org

Volume 2020, Issue # 3



WSMGS OFFICERS

President: Jim Gray

pres@wsmgs.org

Vice President: Linda Richendifer

vpres@wsmgs.org

Secretary: Leane Gray

sec@wsmgs.org

Treasurer: Stan Strike

treas@wsmgs.org

Historian: Roger McMannis

hist@wsmgs.org

Jade State News Editor:

Ilene Olson

jsn@wsmgs.org

RMFMS State Director:

Jim Gray

wydir@wsmgs.org

RMFMS WY PLAC Director:

Rich Gerow

placdir@wsmgs.org

The WSMGS conducts
meetings quarterly and
as special events require.

Rock Show!

2020 state/regional rock show a success despite challenges

BY BOB JIM GRAY

WSMGS President

More than 1,200 people attended the fourth annual gem and mineral show sponsored by the Sublette County Rock Hounds, which occurred June 19-21 in the Event Center at the Sublette County Fairgrounds in Big Piney.

The event also served as the annual show for the Wyoming State Mineral and Gem Society, and as the annual convention for the Rocky Mountain Federation of Mineralogical Societies.

Twenty-six vendors and four demonstrators from eight states presented

(Continued on Page 2)



Table of Contents

2020 Rock Show a Success.....	Page 1
Showcase Winners.....	Page 2
Message from RMFMS President.....	Page 5
Geology of Glendo State Park.....	Page 6
WSMGS Board Meeting.....	Page 10
Preserving Fish Fossils.....	Page 10
Club News.....	Page 14
Upcoming Rock Shows.....	Page 17
WSMGS Rock Club List.....	Page 18

Rock Show!

(Continued from Page 1)

Twenty-six vendors and four demonstrators from eight states presented their wares and talents, including rough rock, slabs, cabochons, beads, jewelry, opal, jade, flint knapping, fossil preparation, wire wrapping, cabbing, and more.

A T-Rex head, brought by Doug and Jeanette True of Billings, Montana, closely watched the activity at the admissions table!

Several children's activities were available as well.

The Rock Hounds, led by Club President and Show Chairman Jim Gray, hosted the Rocky Mountain Federation of Mineralogical Societies annual convention.

Officers, delegates, and guests from 13 states gathered to conduct their business meeting and awards ceremonies, enjoy a breakfast and a banquet catered by Brandon and Candace Kennedy, proprietors of The Bench Grill. They also attended in the gem and mineral show and participated in field trips.

In addition to the convention, Wyoming State Mineral

and Gem Society officers met and held their meeting and awards ceremony.

Those awards included recognizing Ed and Linda Trimmer of Pinedale as the Sublette County Rock Hounds' club Rockhounds of the Year (Club R.O.Y. award), and SCRH member Cecil McGowen of Mountain View, Wyoming, as the Wyoming Rockhound of the Year (State R.O.Y. award).

Rockhounds of the Year are nominated throughout the state by members of rock clubs, and the nominations are reviewed and winners selected by independent judges who are not affiliated with any of the clubs.

Attendees observed social distance during the convention, and many wore masks.

The most common statement from visitors and members alike was, "This is a great show!"

The Sublette County Rock Hounds are already beginning to plan next year's show, which will be on Father's Day weekend in June 2021. They hope to see you there!



'Real kids' had lots of fun with activities for children at the annual Wyoming State Gem and Mineral Show show in Pinedale.

Photos courtesy of Linda Trimmer of Sublette County Rock Hounds.

(Continued on Page 3)

Rock Show!

(Continued from Page 2)

Club showcase winners

2020 WSMGS state show judging results

Peoples' Choice Winners:

- First: Natrona County Rockhounds
- Second: Shoshone Rock Club
- Third: Rex Young Rock Club
- Fourth: Sublette County Rock Hounds

Independent judges' results

- First: Rex Young Rock Club
- Second: Natrona County Rock Club
- Third: Shoshone Rock club
- Fourth: Sublette County Rock Hounds



Natrona County Rockhounds' showcase, 'Rockin' Wyoming Jade.' Photo courtesy of Dorine Strom, Shoshone Rock Club



Rex Young Rock Club's showcase, Torrington, Wyoming. Photo courtesy of Dorine Strom, Shoshone Rock Club



Shoshone Rock Club, Powell, Wyoming: 'Rockin' Thru the Ages in the Big Horn Basin of Wyoming.' Photo courtesy of Dorine Strom, Shoshone Rock Club



Rock show attendees were able to hunt rocks, such as this Blue Forest petrified wood, during group field trips. Photo courtesy Tina Schaffer, Sublette County Rock Hounds.

(Continued on Page 4)

Rock Show

(Continued from Page 3)

Individual Showcases



Talbot showcase #1 — Bruneau Jasper, Morrisonite; honorable mention. Photos courtesy Tina Schaffer, Sublette County Rock Hounds.



Talbot showcase #2 — Prudent Man Plume Agate and Morrisonite Jasper from Oregon; honorable mention.



Talbot showcase #3 — Bruneau Jasper; honorable mention.



Talbot showcase #4 — Tigillites Bohmei by Claude Brongnaugh; honorable mention.

Dealers display their wares as customers shop at the 2020 Wyoming State Gem and Mineral Show at Big Piney, Wyoming, in June.

Photos courtesy of Tina Schaffer, Sublette County Rock Hounds.



RMFMS president: Annual convention was great

By **BOB REGNER, President**
Rocky Mountain Federation of Mineralogical Societies

As you probably all know by now, we did have our 2020 convention this year. Donna and I left out of Albuquerque a little before 6 a.m. on Wednesday morning, June 17, heading north to Wyoming.

We made our first stop in Pojoaque, where we met up with Dr. Bob to pick up the trophies. From there we just zigged and zagged our way up to Marbleton, Wyoming. A short 12 1/2 hours later, and we were checking into our hotel.

We got up early Thursday, June 18, for our trip out to Kemmerer to hunt for fish fossils. We met up at the fairgrounds and this was the first time we got to meet up with all of those familiar faces and also when we realized who we were probably not going to see this year.

It was great to see all of the familiar faces of those who made it, and sad for the people that we did not get to see. It was quite a drive to the collecting site, but well worth it.

This field trip was a fulfillment of a lifelong dream of mine. From the first time I saw one of these fish fossils I have wanted to collect them myself. The gentlemen who were running Safari Fish Fossils couldn't have been better hosts to our group and they could not have been more helpful.

Everyone found some fish and a few of us found some very amazing fossils. This was not only one of the best fishing trips I have ever been on, and it was a fantastic way to start off our convention.

[NOTE: [See Lapidary hints for preserving fish fossils, page 9.](#)]

The trip to the Blue Forest just wasn't in the cards for me on Friday, June 19, as we had the executive meeting scheduled for 1 p.m. We ended up being just shy of having a quorum, but we still had a pretty good meeting with quite a few interesting discussions and moved a few items to the agenda for the delegates meeting. We

also had time before and after the meeting to check out the gem and mineral show

We got our delegates meeting going and it went pretty well. We did have a quorum but we mostly just discussed future plans.

I believe we only voted on a couple of issues, and you can read all about it when the minutes of the meeting come out. The meeting actually lasted a bit longer than I thought it would for the limited amount of business we had.

As the meeting ended, we all ran off to get ready for the dinner. This is one of my favorite "meetings," because we all get to visit with who we want for as long as we want. This year was even more special because I had the honor of awarding Liz Thomas with the Gold Pan Award.

This is now a very good time to thank and congratulate Jim Gray and his crew for an outstanding and successful show and convention. Their club is only 4 years old and they somehow managed to put on a safe and fulfilling show and convention.

I also heard that they beat their attendance record by several hundred people before it was all over on Sunday afternoon.

A great show, great field trips, great meals, great hospitality, and a great convention.

Thank you to all who attended from the Rocky Mountain Federation and also to special guests. I am hoping to hear that the AFMS convention in Knoxville is a go for this year. It is in October and we have already started packing our bags.

Reference: Rocky Mountain Federation News, July-August 2020 — Vol 51, Issue 5

Editor's note: The American Federation of Mineralogical Societies meeting will take place in a virtual format on October 16-18. The annual meeting for the Southeast Federation of Mineralogical Societies is yet to be determined.



Geology of Glendo State Park

A publication of the Wyoming State Geological Survey



Glendo Reservoir, Glendo State Park

Introduction

Glendo State Park is the home of Glendo Reservoir, located along the North Platte River. The geology exposed around the park—representing more than 300 million years of Earth history—is largely visible because the North Platte River cut a canyon through this region, leaving the landscape seen today. These rock exposures allow a better understanding of the geologic history of the region, telling a story of inland flooding, dinosaurs, mountain building, and volcanism.

Geologic History

The oldest rocks exposed in Glendo State Park, along the northwestern edge of the reservoir, are the gray to white limestones and red silty sandstones of the Hartville Formation. These Pennsylvanian- and Permian-age

beds were deposited about 300 million years ago in a shallow subtropical ocean that once covered the region. The Hartville Formation also makes up the cliffs above the reservoir at nearby Guernsey State Park.

As this ancient ocean retreated, a broad, flat coastal plain developed. It was in this setting that the middle Permian to Lower Triassic Goose Egg (~250 million years old) and the Triassic Chugwater (~230 million years old) formations were deposited. The Goose Egg Formation contains interbedded rusty-red shales, limestones, and evaporites (mineral deposits left after water evaporates). The Chugwater Formation is made up of red shales, siltstones, and thin evaporite beds. The distinctive red-colored beds found in both formations are

Continued on Page 7

Geology of Glendo State Park

(Continued from Page 6)

the result of oxidation (rusting) of naturally occurring iron in the rock.

During the Jurassic Period, a waterway called the Sundance Sea flooded the arid continental interior, stretching from what is now northwestern Canada to northern Colorado.

Its migrating shoreline deposited sands, silts, and muds, which eventually became the sandstones and mudstones of the Sundance Formation (~175 million years old). In Glendo State Park, the Sundance Formation is exposed most commonly as yellow-green silty sandstones.

As the Sundance Sea retreated, the region returned to an arid terrestrial environment populated by dinosaurs. During this time the Morrison Formation (~155 million years old) was deposited, which consists of colorful layers of shales and claystone interbedded with sandstone and limestone.

The Morrison Formation occurs across the western United States, and is well known for its abundance of world-class dinosaur fossils, which accumulated and were later preserved in river channels.

A wide variety of dinosaurs have been found within this formation, including the plant-eating stegosaurus, long-necked sauropods, and the carnivorous allosaurus,

but none have been found in Glendo State Park to date. Cretaceous rocks exposed in Glendo State Park include the Cloverly Formation, which was deposited in rivers, floodplains, and lakes approximately 140 million years ago.

The Cloverly Formation consists primarily of sandstone beds varying from tan to white and gray, with a middle section dominated by gray claystones. In the southern end of the park, tan sandstone beds of the Cloverly form prominent cliffs capping slopes above the reservoir and the North Platte River.

Around 70 million years ago, a geologic mountain-building event called the Laramide orogeny began, continuing until about 35 million years ago. The word “orogeny” comes from the Greek roots oros, meaning “mountain,” and gen, meaning “creation.”

During this time, deformation of the earth's crust formed many of the mountain ranges that make up the Rocky Mountains in western North America.

One of the structures formed by the Laramide orogeny is the Hartville Uplift, a large northeast-trending arch-shaped fold, known as an anticline, which is located between the Laramie Mountains and the Black Hills. Glendo State Park is situated along the northwestern edge of the Hartville Uplift.



Yellow sandstone (resistant blocks in foreground) and mudstones (slope in the background) of the Jurassic Sundance Formation.(slope in the background) of the Jurassic Sundance Formation.

Continued on Page 8

Geology of Glendo State Park

(Continued from Page 7)

The folding of the Hartville Uplift made it a high point in the region, which resulted in erosion of rocks exposed at the surface and a gap in the rock record, known as an unconformity.

In the Glendo area, this unconformity represents more than 60 million years of missing time between the Cloverly Formation, which was deposited before the Laramide orogeny began, and the overlying White River Formation, which was deposited after the orogeny ended.

The Arikaree Formation (~24 million years old) was deposited on top of the White River Formation (~33 million years old).

These two formations are geologically similar; both contain interbedded ash-rich claystones, siltstones, and sandstones that represent ancient river, soil, and volcanic ash-fall deposits.

The ash within these formations came from explosive volcanic eruptions that occurred across the western United States.

Both formations also host well-preserved mammal fossils, including the ancestors of horses, rhinoceroses, and camels.

Regional hydrogeology

Glendo Reservoir can hold up to 789,402 acre-feet of water behind an earthfill dam that was constructed in 1958 on the North Platte River. Glendo is the third largest of five reservoirs on the North Platte River in Wyoming.

Most of the water originates as surface runoff from parts of the Sierra Madre, Medicine Bow, and Laramie mountains in Wyoming, as well as the mountains circling North Park, Colorado.

The Arikaree, White River, and Hartville formations are important aquifers in eastern Wyoming. The Arikaree and White River formations are part of the High Plains aquifer system, a series of interconnected aquifers spanning eight states from Wyoming to Texas and New Mexico.

This system is an important source of agricultural water in these states. Cheyenne, Wheatland, Pine Bluffs, and many other Wyoming communities also use High Plains aquifers as municipal water sources. The town of Glendo gets its municipal water supply from wells in the Hartville Formation, while Glendo State Park sources its water from the White River and Cloverly formations.

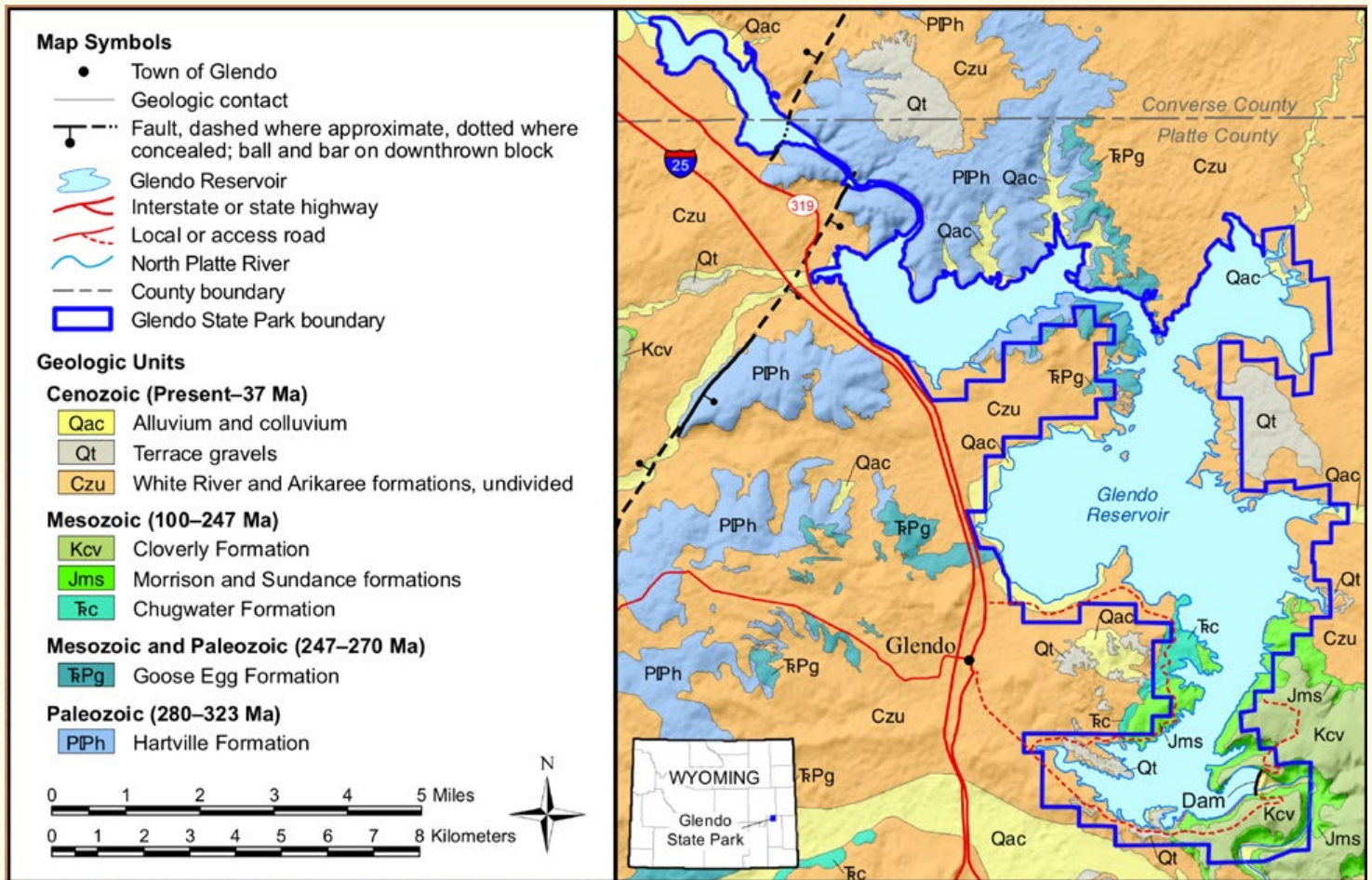


Tan sandstone beds of the Cloverly Formation (Kcv) form cliffs that top many hillsides and ridges in the southern portion of the park. Beneath the Cloverly are slope-forming mudstones and thin sandstone beds of the Morrison Formation (Jm). The Twenty 15 trail can be seen cutting across the lower part of the hillside.

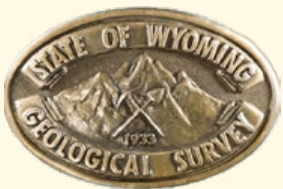
Continued on Page 9

Geology of Glendo State Park

(Continued from Page 8)



Generalized bedrock geologic map of Glendo State Park. Ages of geologic units are in millions of years (Ma).



For more information, visit: wyoparks.state.wy.us/index.php/places-to-go/glendo

Wyoming State Geological Survey • P.O. Box 1347 Laramie, WY 82073-1347

www.wsgs.wyo.gov • phone: (307) 766-2286 • email: wsgs-info@wyo.gov

Preserving fish fossils from the Green River Formation

By JIM LAUGHTER
Laughter's Fossils

For those who brought home fish fossils from the Convention field trip:

1. Let it dry, completely. It will turn from a light gray to a light tan in color.
2. Using a dental pick and/or flex-shaft, clean up or expose your fish.

3. Using a small brush, paint just the fish with Vinac (or Minwax Clear Polyurethane). Let dry.

4. Mix 7 oz of Elmer's Glue with 1 gallon of water. Immerse entire slab in solution to soak. Let dry.

If you do not do this, your prized collection will crumble.

Jim Laughter, rigboss88@gmail.com



Annual WSMGS Board Meeting

June 2020

Wyoming State Mineral and Gem Society Annual Meeting

Big Piney, Wyoming, June 18, 2020

Approved WSMGS annual meeting minutes, Sublette County Fairgrounds, Community Hall – Big Piney, Wyoming; June 18, 2020

Roll call:

- Cheyenne Mineral & Gem Society:
- Fifty-Niners Rock Club (Cody):
- Natrona County Rockhound Club (Casper): Mac Goss, Heaven Goss
- Northeast Wyoming Rockhounds:
- Rex Young Rock Club: Dale Tilkalsky, Kim Nielson
- Riverton Mineral and Gem Society:
- Shoshone Rock Club: Dorine Strom
- Sublette County Rock Hounds: Jim Gray, Mike Schafer, Leane Gray, Roger McMannis

Secretary's minutes

6/20/19 minutes were approved as prepared by Secretary Leane Gray (Mac Goss moved, Kim Nielson seconded, motion carried).

Annual Treasurer's Report

Treasurer's report approved as presented by Treasurer Stan Strike. [See report on Page 12.](#)

Reports

Annual President's Report: Jim Gray thanked everyone who has

helped and will help throughout the 2020 Show this weekend. Registrations for the Rocky Mountain Federation of Mineralogical Societies will occur tomorrow.

This year the RMFMS Geology Scholarship awards will both be given to geology students at the University of Wyoming, selected by now retired Wyoming Geological Survey geologist Wayne Sutherland. One of those students is able to be present for the award ceremony Saturday evening.

Jim presented information about the American Lands Access Association about which he learned in Quartzsite, Arizona earlier this year. The American Federation of Mineralogical Societies is a supporter of this Association. Paul Gosar, an Arizona Congressman, gave a presentation about the actions of the Association to protect public access to public lands for multi-use purposes throughout the western United States.

Jim will send out information about membership to all of the Clubs. Dorine Strom made a motion for WSMGS to join the American Land Access Association for an annual membership cost of \$50, Mac Goss seconded, motion carried.

Discussion occurred about upcoming WSMGS annual mineral and gem shows. Rex Young Rock Club in Torrington is very small club therefore is not interested in hosting a show at this time.

Shoshone Rock Club is an older group of members, has historically co-sponsored with the Fifty-Niners in Cody, and has new fairgrounds building in Powell that could possibly be a good location for a future show in Park County with ample parking and more spacious show space.

Natrona County Rockhound

Annual Membership Report

Club Name	Adults	Juniors	Pebble Pups	Life Honorary	Total
Cheyenne MGS	89	0	0	14	103
Cody 59ers Rock Club	104	4	14	4	126
Natrona Co. Rock Club	23	0	1	5	29
NE Wyoming Rockhounds	47	7	5	0	59
Rex Young Rock Club	22	0	0	0	22
Riverton MGS	137	7	4	13	161
Shoshone Rock Club	34	0	0	6	40
Sublette County Rock Club	151	14	29	5	199
Totals	607	32	53	47	739

Continued on Page 11

WSMGS Electronic Board Meeting, April 2020 (Continued from Page 10)

Club president Mac Goss requested the opportunity to host the 2021 annual WSMGS show. Jim Gray made a motion to award the 2021 annual show to Natrona, Dorine Strom seconded, motion carried.

Annual Historian Report

Roger McMannis reminded all Clubs to submit their information no less than annually to the Historian by email or mail. Currently, Roger has received reports and/or information from Shoshone, Cody, Rex Young, and Sublette clubs. Dorine commented how helpful the historical reports can be when researching what clubs have done in the past such as field trips and educational presentations.

Jade State News

(Editor – Ilene Olson; jsn@wsmsg.org). Please submit news items via email; next due date is August 1st.

RMFMS Wyoming State Director Report

State Director's full report is attached.

2020 RMFMS Convention – June 19 – 21, 2020 in Big Piney, Wyoming. Each club is entitled to two votes.

Stan Strike has retired from his role as the Wyoming State Director. The WSMGS Board nominated Jim Gray (the current WSMGS President) to this position in the April 2020 meeting. Jim Gray presented a certificate of appreciation to Stan Strike for his dedicated service to WSMGS;

Dorine Strom accepted the certificate for Stan.

WSMGS Website

The website domain has been renewed to 10/30/21, and the logo has also been renewed to 2021. It is important NOT to change the bucking horse logo in any way.

WY RMFMS Public Lands Access Committee Report

(PLAC) – RICH GEROW reports are published in the Jade State News.

OLD BUSINESS

None

NEW BUSINESS

Board Member participation in WSMGS business was opened for discussion by President Jim Gray. It is very important for the members of the Board to be active in their roles representing the interests of the Clubs in the State. WSMGS pays each Board Member who travels to the annual show and who is not a vendor at the Show a \$150 travel stipend.

All meetings are conducted electronically each quarter except during the annual mineral and gem show where the Board meets in person. In the event a Board Member is unable to attend the annual meeting, he or she is expected to contact the Board President as soon as possible before the meeting and submit reports for the meeting so the reports can be presented at the meeting. Mac Goss made a motion that if a Board Member's absences are unexcused and/or repetitive, the Board member should resign, Roger McMannis seconded, motion carried.

The WSMGS historical files, State Heritage case contents and Jade case contents will be stored in the WSMGS cargo trailer. Jim Gray recommends shelving be constructed in the trailer for more efficient storage in that trailer.

Museum Award, 2020

Museums discussed among those present were Glenrock Museum, Western History Center between Lingle and Fort Laramie, and the Thermopolis Historical Society. Dorine Strom nominated the Western History Center, Roger McMannis seconded, motion carried. A \$100 award will be sent to the Western History Center between Lingle and Fort Laramie for 2020.

ROY AWARDS

2020 CLUB Rockhound of the Year awards:

- Cody 59ers – **Ross Gorman**
- Shoshone Rock Club – **Dorine Strom**

• Riverton Mineral & Gem Society – **Holly Skinner**

• Sublette County Rockhounds – **Ed & Linda Trimmer**

CLUB Junior Rockhound of the Year award: NONE

The 2020 STATE Rockhound of the Year award:

- Sublette County Rockhounds – **Cecil McGowen**

ADJOURNMENT

Dorine Strom made a motion to adjourn, Dale Tikalsky seconded, motion carried.

Continued on Page 12

Annual WSMGS Board Meeting, June 2020 (Continued from Page 11)

WSMGS Treasurer's Report, June 2020

ITEM	WSMGS-CodyBankoftheWest					BALANCE	BANK
Check #	DateWritten	Bank Date	Check Written To/Deposit From	Check/Deposit	Check From:		
Deposit	9/9/2019	10/7/2019	Donation New WSMGS State Trailer	\$500.00	Riverton M&GS	\$500.00	
Deposit	9(10)/4/2019	10/7/2019	Donation New WSMGS State Trailer	\$500.00	Cody 59ERS	\$1,000.00	
Deposit	9(10)/4/2019	10/7/2019	Payment for Old WSMGS Trailer	\$1,000.00	Cody 59ers	\$2,000.00	
Deposit	910/&/19	10/7/2019	Transfer From Valley Credit Union	\$1,283.89	WSMGS Account	\$3,283.89	
Deposit	10/4/19	10/23/2019	Refund for WY Sales Tax Paid New Trailer	\$80.00	Park Co. Treasurer	\$3,363.89	
Deposit	10/23/2019		Closed Valley Credit Union Account	\$275.01	Valley Credit Union	\$3,638.90	
Check 101	10/23/2019	Voided	Voided-Park Co. Treas.-Old Trailer Sold		VOIDED	\$3,638.90	
Check 102	10/23/2019	10/25/2019	Cody 59ers Rock Club-80% of \$275	\$200.00		\$3,438.90	10/31/19
Bank	10/16/2019	10/16/2019	Direct Charge By Bank-Printed Checks	\$30.00		\$3,408.90	\$3,408.90
Check 126	11/7/2019	11/12/2019	8th Street Ivy Inn-Malene's Thank You	\$50.00		\$3,358.90	11/30/2019
Deposit	11/5/2019	11/22/2019	Cody 59ers 2020 dues	\$162.00	Cody 59ers	\$3,520.90	\$3,520.90
Check 103	12/9/2019	12/17/2019	RMFMS-2020 Dues/Insurance	\$12.90		\$3,508.00	
Deposit	11/25/2019	12/9/2019	Sublette Co. Rockhounds-2020 dues	\$246.00	Sublette Co. RH	\$3,754.00	
Check 104	12/11/2019	12/20/2019	Ilene Olson-Nov. 2019 JSN	\$75.00		3,679.00	
Deposit	12/10/19	12/16/2019	Closed Account Transfer Refund	\$583.86	WY community Bank	\$4,262.86	12/31/2019
Deposit	12/14/2019	12/16/19	Shoshone Rock Club 2020 Dues	\$51.00	Shoshone Rock Club	\$4,313.86	\$4,313.86
Deposit	12/28/2019	1/3/2020	Cheyenne 2020 Dues	\$115.50	Cheyenne M&GS	\$4,429.36	
Deposit	11/11/2019	1/3/2020	Riverton JSN Donation	\$100.00	Riverton M&GS	\$4,529.36	
Deposit	1/6/2020	1/9/2020	Rex Young-Torrington 2020 Dues	\$33.00	Rex Young Rock Club	\$4,562.36	
Deposit	12/31/2019	1/9/2020	NE WY RockHounds 2020 Dues	\$81.00	NE RockHounds	\$4,643.36	
Deposit	1/3/2020	1/10/2020	Riverton M&G Soc. 2020 Dues	\$216.00	Riverton M&G soc	\$4,859.36	
Check 105	1/14/2020	1/15/2020	UPS Store-RMFMS contest Printing	\$8.32		\$4,851.04	1/31/2020
Check 106	1/14/2020	1/17/2020	USPS-RMFMS contest Postage	\$5.55		\$4,845.49	\$4,845.49
Check 107	1/15/2020	2/10/2020	Ilene Olson-Postage-RMFMS-contest	\$7.35		\$4,838.14	2/29/2020
Deposit	2/12/2020	2/18/2020	Natrona Co. RH-2020 Dues	\$34.50	Natrona Co. R.H.	\$4,872.64	\$4,872.64
Check 108	3/2/2020	Voided	Ilene Olson-Feb. 2020 JSN	\$75.00	VOIDED	\$4,872.64	3/31/2020
Debit	3/3/2020	3/4/2020	iPage Webpage Hosting Renewal 3 years	\$250.20		\$4,622.44	\$4,622.44
Bank Fee	4/30/2020	4/30/2020	Bank West-paper Statement	\$3.00		\$4,619.44	4/30/2020
Check 109	5/27/2020	5/29/2020	Park CO. Treasurer-Trailer Licence	\$47.82		\$4,571.62	\$4,619.44
Check 110	5/27/2020	6/26/2020	Ilene Olson-May 2020 JSN	\$75.00		\$4,496.62	
Debit	5/24/2020	5/26/2020	Walmart-ROY certificates & frames	\$14.68		4,481.94	
Check 111	5/27/2020	6/15/2020	WY4-H Found.-State Fair Geology Award	\$50.00		\$4,431.94	
Deposit	5/7/2020	5/7/2020	Jim Gray Donation	\$5.00		\$4,436.94	5/31/2020
Bank Fee	5/29/2020	5/29/2020	Bank West-Paper statement	\$3.00		\$4,433.94	\$4,558.94

Continued on Page 13

Annual WSMGS Board Meeting, June 2020 (Continued from Page 12)

WSMGS Treasurer's Report, June 2020 — continued

Check 112	6/2/2020	6/8/2020	Art,Sand,&Steel-WYstateROYaward	\$52.00		\$4,381.94	
Check 113	6/7/2020	6/19/2020	SubletteCo.RH.-State Show Food	\$200.00		\$4,181.94	
Check 114	6/19/2020		WesternHistor CenterMuseum Award	\$100.00		\$4,081.94	
Check 115	6/14/2020 Voided		LindaRichendifer-StateShowExpenses	\$150.00	VOIDED	\$4,081.94	
Deposit	6/30/2020	6/30/2020	Jim Gray Donation	\$5.00		\$4,086..94	6/30/2020
BankFee	6/30/2020		BankWest-Paper Statement	\$3.00		\$4,083.94	\$4,183.94
Check 116	7/7/2020		IleneOlson-lost#108Feb.JSNcheck	\$75.00		\$4,008.94	

RMFMS Wyoming State Director's Report 2020 RMFMS Convention-Marbleton, Wyoming

The Wyoming State Mineral And Gem Society, Inc. (WSMGS) Board consists of six members who conduct electronic meetings quarterly and an Annual Meeting at the State Mineral and Gem Show.

The RMFMS Wy State Director is a member of this board. The WSMGS presently has 8 affiliated Wyoming clubs located in Casper, Cheyenne, Cody, Gillette, Marbleton, Powell, Riverton, and Torrington.

Unfortunately, the Kemmerer club — Fossil Basin Mineralogical Society — disbanded with the loss of two of its 8 members.

These members were leaders in organizing the formation of the club as well as developing its bylaws/articles of incorporation and registering with the WY secretary of state as an incorporated nonprofit. Hats off to the little club who did it all!

1. The WSMGS total affiliated membership as of October 31, 2019 was 739 members — an annual increase of 25 members.

2. The WSMGS has updated its Dues Form to accurately provide

membership data: as to adults (18+), juniors (12-17), pebble pups (under 12 yrs), and honorary/life. This recognizes the AFMS guidelines and the RMFMS dues/insurance requirements.

([See the WSMGS-2020 membership report on page 10.](#))

3. As RMFMS State Director, I email the RMFMS Newsletters and RMFMS Convention Information to all of our WSMGS affiliated clubs. I will also collect proxies from all WSMGS clubs who will not be sending their own delegates to the House of Delegates meeting on June 20, 2020 in Marbleton, WY.

4. The following is a listing of our regional Mineral & Gem Shows:

- May 2-3, 2020

Billings Gem & Mineral Show at the Al Bedoo Shrine Auditorium, 1125 Broadwater Ave., in Billings, Montana.

- May 16-17, 2020

Cheyenne Mineral, Gem, Fossil, Rock Show, Archer Complex Building, 3967 Archer Pkwy in Cheyenne, Wyoming.

- June 19-21, 2020

Wyoming State Mineral & Gem Show RMFMS Convention, Sublette

County Fairgrounds, in Marbleton, Wyoming.

- July 11-12, 2020

Casper Gem & Mineral Show, Ramkota Hotel, 800 N. Poplar in Casper, Wyoming.

- Sept. 10-20, 2020

Denver Gem & Mineral Fall Showcase

5. I, Stan Strike, will be retiring as RMFMS Wyoming State Director with the confirmation by the RMFMS House of Delegates at their 2020 meeting in Marbleton, WY. My successor will be recommended by the WSMGS Board of Directors to the RMFMS Executive board prior to the House of Delegates meeting.

6. A special Wyoming welcome to all of the RMFMS executive committee members and the RMFMS delegates attending the 2020 RMFMS Convention in Marbleton, Wyoming! Be sure to check out our website: wsmsg.org prior to coming in order to learn more about Wyoming rockhounding.

Stan Strike, RMFMS Wyoming State Director



Club News



Cody 59ers: Field Trip Fun

Because of the Covid-19 pandemic, the 59ers Rock Club's March meeting was cancelled and the April meeting was conducted for those who wished to attend. The May meeting was conducted via Zoom or members could choose to attend in person.

The 59ers completed a showcase for the 2020 WSMGS State Show but were unable to participate in the show, because one of our delegates was diagnosed with COVID-19.

This display was set up at a later date at the Park County Library in Cody for the public to view.

A special thank you to those club members who helped to move the four trailer-loads of club rocks to their new storage location.

And a special shout out to Roger and Joy Lyons for being our rock caretakers these past years.

The 59ers do not meet during the summer, but conducted socially-distanced field trips as per the following schedule. The accompanying photos illustrate some of our early field-trip finds.

Note that the youngest members often find the best rocks!

2020 Cody 59ers Field Trips

- Feb 1- Feeley Pit, Cody
- Feb 29- Hot Springs County Museum and Wyoming Dinosaur Center, Thermopolis
- May 25- Basin and Greybull Gravel Terraces and Lovell Draw (Spence Jasper)
- June 13- Kane Gravels and John

Blue Canyon

[COVID 19 Break]

• Aug 3 — Birdseye/Tough Creek, Owl Creek/Bridger Mountains

• Aug 8 — Hunt Mountain Ordovician Fossils, Bighorn Mountains

• Aug 15 — Bear Canyon Agate, Pryor Mountains, Montana

• Sept 15 — Dryhead Agate, Pryor Mountains

• *Oct 3 — Gypsum Springs, Lovell **

• *Oct 17 — Nowood Gravel Beds, Manderson **

• *Nov 7 — Rainbow Canyon, Lovell **

** Date depends on weather*

*** Location could change based on*



Club rock moving day for the Cody 59ers. Photos courtesy of Nella Flurkey, Cody 59ers.



Sean Lowe holds the chain coral he found in the Big Horn Mountains.

Continued on Page 15

Club News

(Continued from Page 14)

Cody 59ers: Field Trip Fun (Continued)



Above: Dorine Strom stands beside chert, jaspers, and chalcedony collected at John Blue Canyon. Right: Young rockhound Sean Lowe shows off the triple Bear Canyon geode he found. Lower left: Aventurine found on Birdseye Road. Lower right: Fortification agate discovered in Bear Canyon. Photos courtesy of Nella Flurkey, Cody 59ers.



Club News

(Continued from Page 15)

Sublette County Rock Hounds

July 18, 2020

Jim Gray called the meeting to order at 1:22 pm, at the park in Marbleton. There were 16 in attendance. The June meeting minutes were distributed by email.

2020 Show Review:

Dr. Fitzsimmons attended the Show on Friday and on Saturday and reported to Jim that he was satisfied that we had met the expectations for designing the show to promote social distancing, hand cleaning, and wearing masks.

Jim reported that the 2020 Show turned out GREAT.

He relayed positive comments from attendees including Doug True, the past president of the American Federation of Mineralogical Societies, current AMFMS Field Trip Coordinator, and Show Chairman of the Billings Gem & Mineral Club.

Doug said our potluck and Show were both very good. No reports of COVID-19 have come from our Show.

Ideas for the 2021 show were conveyed by members such as inquiries about taking credit/debit cards, having a 3-day pass, and having an ATM at the show. Research will be done about an ATM.

Field Trip Schedule:

Field Trips were discussed and will be delayed due to the hot weather. Field Trip Coordinator, Roger McMannis, is working on some to take place soon. Topaz

Mountain, led by Joe and Dawn Humes, will occur following the Tooele, Utah show that occurs September 25-27.

Other trips being developed include a couple south of Big Piney, turritella agate collecting, Whiskey Basin, and a jade trip led by Mac Goss later in the fall when the temperatures are cooler.

A discussion of rattlesnakes occurred: they are shedding their skins now and during this time they do not rattle and are blind so particular caution should be exercised when rock hunting in areas with rattlesnakes.

Anyone who would like to lead a club trip are to contact our Field Trip Coordinator, Roger McMannis, to schedule that.

Annual Dues Renewal Period:

The annual Club dues renewal is June 1. Renewal notices were mailed to existing members who had provided complete mailing addresses on their membership forms. Family dues for 2020-21 remain at \$20, single member dues are \$15. If renewals are not received by July 31, the member will be removed from the email and mailing lists until such time the 2020-21 dues are received.

Club Vests?

Jim Gray described that many clubs have club vests on which patches and pins from the organizations and shows are placed. The vests are typically worn to Shows. He asked the members whether they would like to have club vests and whether we would want to sew them or order them. Jim suggested our club colors of red with white piping around the edges. Billings' club

is light blue; one of the Utah clubs is bright yellow, just to name a couple examples. Roger stated that he had done some research and the cost to order will be \$25 - \$30 each for a quality vest that would last a long time. Jim asked the members to think about this and we will discuss it more in future meetings.

Jim will research the cost of Sublette County Rock Hounds patches and present at the next meeting.

The next meeting will be August 15, 2020 at a location to be announced.

Upcoming shows:

- Tooele, Utah September 25 -27, 2020

- Wasatch, South Jordan, Utah October 16-18, 2020

- Cedar City, Utah pending Meeting adjourned at 1:45pm.

Door Prize: a beautiful display piece of petrified wood, was donated by Cory Tatum, won by Brad Balue.

Silent Auction items were donated by several members and included slabs of obsidian, blue forest, petrified palm, sycamore, jaspers, agates, fresh eggs, and strawberry rhubarb jam.

Respectfully submitted,

President, Jim Gray,

Secretary, Deb Jess

Vice President, Mike Schaffer

Treasurer, Leane Gray

Roger McMannis, Field Trip Coord.

Continued on Page 17

Club News

(Continued from Page 16)

Cheyenne Mineral and Gem Society

Cheyenne Mineral & Gem Society had a meeting in September at the IBEW Hall, which was allowing meetings up to 50 people.

No program was scheduled except for the "Find of the Month." Members were encouraged to bring something they found over the summer, tell the club about it, and members voted on best.

Members were asked to wear masks if they wanted to. Treasurer Jan Shivley had masks and wipes available. To be on the cautious side, the club did not provide any open food or drinks, but Jan brought bottled water so everyone could have their own container.

The club planned a field trip on Saturday, September 12, to an area of Shirley Basin where they could get small pieces of Wyoming petrified wood to use as handouts for the 2021 rock show. Members also were welcome to collect for themselves.

Shivley reminded club members to bring out what they took in, and of the need to make sure they did no damage.

Shivley said multiple people have contacted her about the club.

"I am welcoming them to our meeting and on this trip," she said in an email. "New people are also expected to sign our liability sheet as well as current members."

Upcoming events

Outdoor Rock Show

3rd Annual

Northeast Wyoming Rockhounds Club ROCK SHOW

Saturday, September 26, 2020**9:00 am to 3:00 pm****Gillette, Wyoming**

**Location: Dalbey Memorial Park – Veteran's Memorial Shelter
(aka Gillette Fishing Lake – Shelter is near the corner of Hwy 59
and Edwards Road) This will be outdoors.**

Admission: FREE to all

Vendors: Free – PM Jeffrey Hulings on Messenger to for vendor info.

**We will have grab bags for the kids, rock auctions and
giveaways! Come visit and look around!**



WSMGS Rock Clubs

Riverton Mineral & Gem Society

P.O. Box 1904
Riverton, WY 82501

rivertonmgs@wsmgs.org
www.RivertonMGS.com

Meets 2nd Mon. 7 p.m.
(Jan.-May, Aug.-Nov.)

Senior Center, 303 E. Lincoln, Riverton

President: Linda Richendifer
Vice-President: Stan Grove
Treasurer: Cristy Quinn
Secretary: Holly Skinner
JSN: Kim Brown
Historian: Open
Field Trips: Ted Knowles

Cheyenne Mineral & Gem Society

P.O. Box 21412
Cheyenne, WY 82001

cheyennemgs@wsmgs.org

Meet 2nd Wed. 7 p.m. (August-May)
IBEW Union Building
810 Fremont Street-Cheyenne

President: Open
Vice President: Open
Treasurer: Jan Shively
Field Trip: Mark Shivel

Natrona County Rockhounds

P.O. Box 123,
Casper, WY 82644

natronarockhounds@wsmgs.org

Meets 1st Monday 7 p.m. (April-Dec)
Shop Open 6-8 p.m. Tue & Fri at
Clubhouse, 5211 Rambler, Mills

President: Martin "Mac" Goss
Vice-President: John Hines
Treasurer: Kenny Platte
Secretary: Martin "Mac" Goss

Cody Fifty-Niners Rock Club

P.O. Box 1251
Cody WY 82414

cody59ers@wsmgs.org
www.Cody59ers.com

Meets 4th Thursday (Sept-May) 6:30 p.m.
Park County Courthouse, EOC room,
1002 Sheridan Ave., Cody

President: Greg Jones
Vice-President: John Severeide
Treasurer: Aubrey Smith
Secretary: Janet Lorher
Historian: Stan Strike
Field Trips: Nella Flurkey



Sublette County Rock Hounds Club

P.O. Box 1351
Big Piney, WY 83113

subletterockhounds@wsmgs.org

Meets 1 p.m. 3rd Saturday (March-Dec)
The Bench Grill
415 Winkleman, Marbleton

President: Jim Gray
Vice-President: Mike Schaffer
Treasurer: Leane Gray
Secretary: Deb Jess

Shoshone Rock Club

P.O. Box 256,
Powell, WY 82435

shoshonerockclub@wsmgs.org

Meets 2nd Tuesday 7 p.m.
Powell Library
317 E. Third St., Powell

President: Dorine Strom
Vice-President: Mary Vogel
Treasurer: Linda Thomas
Secretary: Linda Jennings
JSN: Ilene Olson
Historian: Linna Beebe
Field Trips: Dorine Strom

Rex Young Rock Club

112 East 3rd
Lingle, WY 82223

rexyoungrockclub@wsmgs.org

Meets 2nd Wednesday 7:00 p.m.
Senior Center
216 E. 19th Ave., Torrington

President: Kim Nielsen
Vice-President: Sherman Lenhart
Treasurer: Helen Vogel
Secretary: Joyce Trowbridge
JSN: Joyce Trowbridge
Historian: Joyce Trowbridge
..... Dale Tikalski

Northeast Wyoming Rockhounds

2107C N. Hwy 14-16
Gillette WY 82716

newyrockhounds@wsmgs.org

Meets odd # months
Check email for dates

President: Jeff Hulings
Vice-President: Dennis Brown
Treasurer: Beth Raab
Secretary: Vanessa Grove