

Jade State News

Wyoming State Mineral & Gem Society, Inc.

Award Winning WSMGS Website: wsmgs.org

Volume 2018, Issue 3



WSMGS OFFICERS

President: Jim Gray
pres@wsmgs.org

Vice President: Linda Richendifer
vpres@wsmgs.org

Secretary: Leane Gray
sec@wsmgs.org

Treasurer: Stan Strike
treas@wsmgs.org

Historian: Rod Baltes
hist@wsmgs.org

Jade State News Editor: Jennifer Flowers
jsn@wsmgs.org

RMFMS State Director: Stan Strike
wydir@wsmgs.org

WebMaster Tech: Marlene Sibley
webmaster@wsmgs.org

*The WSMGS conducts meetings
quarterly and as special events require*

Welcome to the 2018 WSMGS WY State Mineral & Gem Show

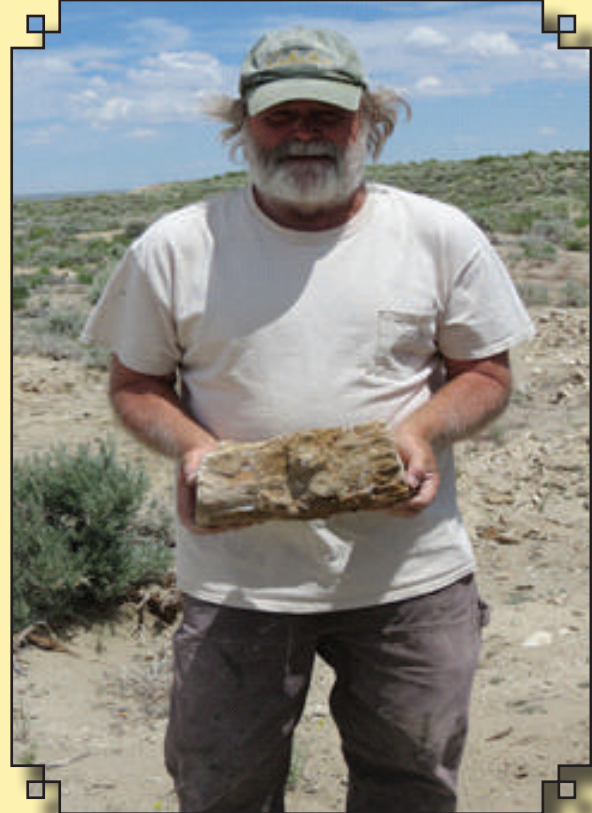


State Show & Awards	Pages1-3
WSMGS Info & Updates	Pages4-10
Membership Dues Form	Pages 11
Fenn's Treasure	Page12-13
WSMGS Club ROY's Nominations	Pages13
Gary Olsen	Pages 14-15
ROY Nomination form	Page 16
Club Reports	Pages17-22
WSMGS Directory & Officers	Page23

Welcome to the 2018 WSMGS WY State Mineral & Gem Show continued from page 1



Digging for Blue Forest Petrified Wood



Finding Blue Forest Petrified Wood

PEOPLES' CHOICE AWARDS

1st Place
Cody 59ers Rock Club



PEOPLES' CHOICE AWARDS continued from page 2

PETRIFIED WOODS OF WYOMING

2nd Place
Shoshone Rock Club

Sublette County Rockhounds

3rd Place
Sublette County Rockhounds

Individuals Display Awards



1st Place Jim & Leane Gray



2nd Place Roger McMannis



12
Sublette
Club
Members
Cases!!



WSMGS BOARD INFORMATION & UPDATES

UNAPPROVED WSMGS ANNUAL MEETING MINUTES SUBLETTE COUNTY FAIRGROUNDS – BIG PINEY, JUNE 14, 2018

- I. **ROLL CALL** – All WSMGS affiliated clubs represented by delegates except Cheyenne and Rex Young (Torrington).
- II. **SECRETARY'S MINUTES** – 6/23/17 approved as prepared by Secretary Carla Tillman and read by delegate Leane Gray.
- III. **ANNUAL TREASURER'S REPORT** – Treasurer's report approved as presented by Treasurer Stan Strike. Report is as follows:

WSMGS 2017-2018 ANNUAL FINANCIAL REPORT

Beginning Balance-June 1, 2017 = \$1,879.71

Income:	9-22-17	RMGS for 20% of 2017 state show profit	\$246.04
	10-02-17	RMGS Donation to JSN	\$200.00
		Total Income =	\$446.04
Expenses:			
06/05/17	1048	WY State 4-H state fair geology winner	(\$50.00)
06/13/17	1050	Art,Sand,&Steel-State ROY engraving	(\$52.50)
06/19/17	Debit	Cody UPS store-Annual Meeting printing	(\$10.50)
07/ 07/17	1005	Riverton MGS-meat for State Show Dinner	(\$100.00)
09/20/17	Debit	WYsec.state-2018 Incorp.fee	(\$27.00)
10/02/17	1007	Jennifer Flowers-Aug. JSN	(\$75.00)
10/16/17	1126	Blue & Gold-State ROY engraving/3 plates	(\$28.35)
10/23/17	1127	Park Co. Treasurer-WSMGS Trailer Plates	(\$51.27)
		Total Expenses =	(\$394.62)

Ending Balance-October 31, 2017 = \$1,931.13

Beginning Balance-November 1, 2017 = \$1,931.13

Income:	12-01-17	WSMGS dues Paid:	\$454.00
		[Cody-78,Sublette-114,Shoshone-45,Cheyenne-114/103]	
	12-21-17	WSMGS dues Paid: [Riverton-130]	\$130.00
	01-12-18	WSMGS dues Paid:	\$55.00
		[Rex Young-20, Natrona Co.-35]	
		Total Income =	\$639.00
Expenses:			
11/14/17	Debit	USPS-postage:Jim Gray/George Tillman	(\$10.42)
11/30/17	1128	RMFMS-dues/insurance	(\$12.60)
11/30/17	1129	Jennifer Flowers-November 2017 JSN	(\$75.00)
12/ 01/17	1131	Homesteader Museum-WSMGS Vote	(\$100.00)
01/09/18	1132	WY Rib & Chop-webmaster gift	(\$50.00)
		Total Expenses =	(\$248.02)
Ending Balance-January 31, 2018 =			\$2,322.11

WSMGS BOARD INFORMATION & UPDATES continued from page 4

Beginning Balance - February 1, 2018 = \$2322.11

Income:

2-17-18	Riverton: additional Dues Paid	\$41.00
	Total Income =	\$41.00

Expenses:

2-17-18	1130	Jennifer Flowers – February 2018 JSN	(\$75.00)
2-20-18	1133	8th Street@The Ivy-webmaster Get Well Gift	(\$50.00)
		Total Expenses =	(\$125.00)

(** March-no income or expenses)

Ending Balance – March 31, 2018 = \$2,238.11

Beginning Balance - April 1, 2018 = \$2,238.11

Income:

4-19-18		Riverton: Additional 2017 Show payment	\$356.72
		Total Income =	\$356.72 Exps
5-16-18	1134	WY State 4-H –State Fair Geology winner	(\$50.00)
5-23-18	Debit	Walmart: ROY certificate frames	(\$30.29)
5-23-18	1136	RMFMS Convention Registration –WY Director	(\$43.00)
5-24-18	1135	Jennifer Flowers-May JSN	(\$75.00)
5-29-18	1137	Art, Sand, & Steel-WY ROY rock engraving	(\$52.50)
5-29-18	1138	Blue & Gold Awards-WY Annual ROY engraving	(\$8.40)
		Total Expenses =	(\$259.19)

Ending Balance – May 31, 2018 = \$2,335.64

IV. REPORTS

A. ANNUAL MEMBERSHIP REPORT was approved as prepared by Vice President, Linda Richendifer, and read by President, Jim Gray.

1. October 31, 2017 WSMGS Membership was 598, of which 538 were dues paying members, 10 junior members, and 50 life/honorary members.

WSMGS 2017-18 MEMBERSHIP REPORT (10-31-17)

CLUB LOCATION:	DUES PAYING	JUNIOR	LIFE / HONORARY	TOTAL
CASPER	35	1	9	45
CHEYENNE	90	-	13	103
CODY	78	4	4	86
MARBLETON	114	5	5	124
POWELL	45	-	4	49
RIVERTON	156		15	171
TORRINGTON	20	-	-	20
<hr/>				
TOTALS	538	10	50	598

WSMGS BOARD INFORMATION & UPDATES continued from page 5

B. ANNUAL HISTORIAN REPORT was presented by Historian Rod Baltes. Most clubs have provided their reports, except Natrona the past two years. Cheyenne has submitted some of their reports during this past year. Rod requested the clubs submit the reports monthly or quarterly digitally or by mail. While out-of-state during the winter he saves all of the submissions until he returns to Riverton.

C. JADE STATE NEWS (Editor – Jennifer Flowers; jsn@wsmsg.org).

1. Jennifer expressed appreciation for submissions from the clubs and WSMGS.
2. Marlene Sibley indexes all of the JSN articles for easy reference on the WSMGS website.

D. RMFMS WY STATE DIRECTOR REPORT

1. Report is attached. (See Page 9)

E. WY RMFMS PUBLIC LANDS ACCESS COMMITTEE REPORT (PLAC) –

1. Report is Attached (See Page 8)

V. OLD BUSINESS

A. WSMGS DONATIONS

1. Nominations for the \$100 donation to a museum from WSMGS.
2. 4-H Geology winner at the Wyoming State Fair received \$50, and a thank you letter was received from the winner.

B. Revised Dues Form by Treasurer Stan Strike.

1. Discussion followed that Natrona County Rockhounds' membership decreased with Jennifer Flowers confirming the accuracy of the numbers and noting a lack of follow-up with the membership to encourage renewal.
2. WSMGS Treasurer and RMFMS State Director, Stan Strike, presented a new Annual Membership Dues Report for the WSMGS affiliated clubs to report membership. The new form more closely resembles the RMFMS report form to reduce reporting errors. See attached sheet for the revised WSMGS Annual Membership Dues Report.
3. Cody 59ers' delegate, Roger Lyons, suggested adding a Pebble Pups column to the annual

WSMGS Membership Report beginning with the 2019 report.

4. Regarding the liability insurance with the RMFMS, Stan Strike encouraged the Wyoming clubs to be a part of the RMFMS and urged clubs to have all participants in field trips sign-up as club members and sign the waiver. The insurance includes all ages which is why all ages are included in the membership tallies.
5. President Jim Gray suggested increasing the annual WSMGS dues to \$1.50 beginning with the October 2018 filing. Roger Lyons made a motion to increase the annual WSMGS dues to \$1.50, Rod Baltes seconded, MOTION carried.

WSMGS BOARD INFORMATION & UPDATES continued from page 6

VI. NEW BUSINESS

A. New clubs: Kemmerer has formed, is meeting monthly, and intends to join the WSMGS. The newly elected club President is Don Stuart of the Fossil Basin Mineralogical Society. Gillette and Douglas have people who are considering forming clubs.

B. Nominations for the \$100 donation to a museum from WSMGS included Glenrock Paleontological Museum and Fossil Country Frontier Museum in Kemmerer. Jim Gray nominated the Fossil Country Frontier Museum the \$100 donation, Allea Baltes made the motion, Kristi Glaze seconded, MOTION carried. The Kemmerer museum was approved to receive this year's donation.

C. Bid for the 2019 WY State Mineral and Gem Show:

1. Natrona County Rockhounds expressed interest but to-date no paperwork has been filed. Delegate Jennifer Flowers will follow-up with President Mac Goss; WSMGS President Jim Gray will e-mail the paperwork to Mac, Jennifer, and Stan.

D. State trailer replacement.

1. Jim Gray suggested the State and Clubs consider purchasing a larger State trailer in which to store the items that travel to the annual gem and mineral shows. The current trailer is 5' x 8' and following discussion it was recommended that a 7' x 14' or 7' x 16' heavy duty tandem axle trailer would be preferred. Jim suggested that each club donate money to the State to use for a bigger trailer. Rod suggested putting out a plea to the Clubs and on social media for a larger trailer, several others present agreed and Jennifer Flowers further suggested approaching trailer dealerships for donation or reduced price trailers. Stan recommended brainstorming fund raising opportunities, like a raffle, to raise needed monies. Jennifer Flowers stated she would write an article for the Jade State News regarding the need for a larger trailer.

E. 2020 RMFMS Convention

1. Hosted by the Sublette County Rock Hounds who would like to submit the request for the annual WSMGS show at the same time. Jim Gray, President of Sublette County Rock Hounds, will submit the written request for the 2020 WSMGS show.
2. Stan Strike reported that the RMFMS is no longer involved in the rock show and does not collect any of the proceeds generated by the show.

F. Deceased members – memorials.

1. Please send information regarding members who have passed away during this past year to Stan to be included as memorial recognition at the RMFMS Convention in July.
2. Stan further requested the deceased member information be sent to Jennifer Flowers for inclusion in the JSN.
3. Stan asked the clubs to please use the club e-mail aliases so e-mails go to more than one person, and to keep contact information current.

G. Rock Star Nominations: please submit these nominations with a descriptive paragraph and photo to the JSN. These nominations are for non-club people who promote geology and the earth sciences in their communities. Archived JSN articles contain past Rock Stars. There is not an award associated with the nominations; it is a recognition.

WSMGS BOARD INFORMATION & UPDATES continued from page 7

H. Awards

1. Club ROY nominations:

- a. Ian Parsons, Cody 59ers
- b. Ted Knowles, Riverton Gem & Mineral Society
- c. Gary Olson, Shoshone Rock Club
- d. Joan Balue, Sublette County Rock Hounds
- e. Liam Glaze, Sublette County Rock Hounds, Junior member

2. State ROY (See Pages 13-16) – Gary Olson, Shoshone Rock Club

Rod & Alleta Baltes will submit Gary's State ROY award to Rock & Gem magazine.

Gary's name will be added to the WSMGS ROY plaque.

3. All of these names are sent to RMFMS to be published in the RMFMS Newsletter.

I. Upcoming gem and mineral shows

Natrona County Rockhounds, July 14 -15, 2018, at the Ramkota.

J. Adjournment

Public Lands Access Committee, Wyoming Representative-Rich Gerow

Starting this year the Shoshone National Forest has a new forest supervisor and a new district ranger. So there isn't much else until they get settled into their positions. Last fall the Bridger Teton National Forest was looking for public input on how to manage or close down a few of the dispersed camping sites in the Jackson area so another member and me responded to that. The Jackson District closed several camping spots with permanent gates and placed restrictions at other sites.

Region Two considers itself part of the Yellowstone ecosystem so this makes it problematic for management. We have a high concentration of environmental groups who are constantly opposing correct management and multiuse. I have found out that individually we don't have much of a voice when it comes to public input. The only way our concerns will be heard is collectively through the clubs or federation speaking on behalf of everyone. One big voice is better than a few small voices. This represents many people instead of a few. This is the advantage of belonging to a group. Individually the land management agencies can step on us. But they are not going to tell the federation to go away, they will listen.

Last year I attended a meeting with the Wyoming State legislators. I explained to them that we use our public lands as a classroom for education so we need the roads kept open and no more wilderness areas so we can go where we want to. The Shoshone Forest added four new wilderness areas, Last year more roads got closed. We need to start challenging what the land management agencies are saying and doing. They're supposed to be working for us not the other way around. The rock clubs need to start teaching members what our rights are so we can defend ourselves. The original U.S. Constitution is the law of the land. For more detailed info contact me.-----Rich Gerow, Wyoming RMFMS PLAC Chairman



WSMGS BOARD INFORMATION & UPDATES continued from page 8

WYOMING RMFMS STATE DIRECTOR'S REPORT BY STAN STRIKE

2018 RMFMS CONVENTION-Rapid City, S.D..

The Wyoming State Mineral And Gem Society, Inc. (WSMGS) Board consists of six members who conduct electronic meetings quarterly and an Annual Meeting at the State Mineral and Gem Show. The RMFMS WY State Director is a member of this board. The WSMGS presently has 7 affiliated clubs in Casper, Cheyenne, Cody, Marbleton, Powell, Riverton, and Torrington.

The WSMGS Board provides the following benefits for its WSMGS affiliated clubs:

- Conducts Annual Meeting for delegates representing WSMGS affiliated clubs;
- Promotes communication between WSMGS clubs with Membership Directory;
- Coordinates the annual WSMGS State Mineral & Gem Show (designates a host club, organizes judging of display cases, promotes show advertising, provides recognition awards, provides WSMGS trailer & contents, and secures RMFMS liability insurance);
- Publishes the Jade State Newsletter quarterly with WSMGS news updates, educational earth science articles, lapidary techniques, and WSMGS Affiliated Club News;
- Provides a WSMGS website (wsmgs.org) that provides WSMGS affiliated club information, WSMGS forms/documents, and educational topics related to rockhounding;
- Archives historical records for WSMGS affiliated clubs;
- Forwards RMFMS & AFMS communications to WSMGS clubs;
- Maintains alias email addresses to protect WSMGS club & board members' privacy;
- Allows WSMGS clubs use of WSMGS' 501(c)(3) status for WSMGS approved purchases;
- Provides reminders concerning required state, federal, WSMGS, and RMFMS deadlines.

1. The WSMGS total affiliated membership as of October 31, 2017 was 598 members- an annual decrease of 29 members, which may have been due to inaccurate reporting by a new club treasurer.
2. The WSMGS has updated its Dues Form to accurately provide membership data: as to adults (18+), juniors (12-17), pebble pups (8-11), and honorary/life. This recognizes the AFMS guidelines and the RMFMS dues requirements.
3. The WSMGS has communicated with 3 new Wyoming rock clubs in Gillette, Kemmerer, and Douglas. We have given them information concerning the WSMGS, RMFMS, and the AFMS. To date, the Kemmerer club has verbally committed to joining the WSMGS and RMFMS. We will continue communicating with the other 2 clubs and will visit their meeting to help them organize and promote membership. Jim Gray- president, has been instrumental in these contacts.
4. The WSMGS will continue to encourage the collection and archiving of copies of all WSMGS affiliated clubs legal documents and in their absence the WSMGS Board will help to develop updated or new documents. The WSMGS will also continue to remind and monitor their WSMGS affiliated clubs/societies that they complete the required Wyoming State and IRS reporting.
5. WSMGS communicated to our affiliated clubs a "help & suggestion" document to successfully register with the IRS (new requirement for 2017) and complete the required IRS 990-N form. See a summary on the WSMGS website-wsmgs.org-Newsletters-February 2018-page 10.
6. 2017 Wyoming Mineral and Gem Shows (See details wsmgs.org-Rockhounding WY-Upcoming Events):
Cheyenne Mineral & Gem Society May 19-20, 2018
Wyoming State Mineral & Gem Show-Marbleton- June 15-17, 2018
Natrona County Rockhounds- July 7—8, 2018
7. Communicated 2018 RMFMS Convention and Mineral & Gem show information and required forms.
Collected proxies from all WSMGS clubs not attending the House of Delegates meeting on July 21, 2018.
8. The WSMGS Board will be represented at all 2018 Wyoming Mineral & Gem Shows.



WSMGS BOARD INFORMATION & UPDATES continued from page 9

At the June 14, 2108 WSMGS Annual Meeting and as stated in the previous published minutes the following actions were approved by the delegates that all WSMGS affiliated club members need to be aware:

1. A newly revised Annual Membership Dues Report for the WSMGS affiliated clubs to report membership. The new form more closely resembles the RMFMS report form in order to reduce reporting errors and more accurately report all individual club members. See attached sheets for the revised WSMGS Annual Membership Dues Report. Also in consideration of the Annual Budget with an annual deficit of \$478, it was voted to increase individual membership dues from \$1.00 to \$1.50.

2. It was determined that the WSMGS needs to replace its current single axle Cargo Trailer with a larger dual axle cargo trailer in order to accommodate the 12 display cases donated to WSMGS by the Rex Young Rock Club and the increased volume of rocks within the present trailer. All members are asked to call WSMGS President Jim Gray if you locate a USED 7'X14" or 7'X16' heavy duty dual axle Cargo trailer.

3. The Natrona County Rockhounds had verbally agreed to host the 2019 WSMGS WY State Mineral and Gem Show but failed to submit the required written WSMGS Show Sponsorship Agreement. WSMGS also required Natrona County to provide proof of Liability Coverage for the 2019 State Show. On July 22, 2018, Jim Gray was informed by the Natrona County Rockhounds they could not host the 2019 WSMGS Show.

On July 23rd, Jim Gray sent the following e-mail to all club contacts: "The Natrona County Rock Hounds are unable to, at this time, host the 2019 WSMGS Show. So we would like to see if any other clubs would be interested in doing the 2019 show? Big Piney/Marbleton will be hosting the 2020 Rocky Mountain Federation show and would like to host the WSMGS at the same time. If anyone has any questions or to submit your interest please let me know. Thank you and have a great day."

PLEASE ENCOURAGE YOUR CLUB TO HOST THE 2019 WSMGS MINERAL & GEM SHOW. THE WSMGS BOARD WILL PROVIDE ALL OF THE REQUIRED INFORMATION AND GUIDANCE TO MAKE IT A FINANCIAL SUCCESS.

WYOMING STATE MINERAL & GEM SOCIETY ANNUAL BUDGET

I. INCOME

A. Dues from affiliated dues paying club members, 12 years or older: (10-31-2017)	\$538.00
B. Annual WY State Show Affiliated Club -20% net profit: 2017 State Show	\$602.76
C. Affiliated club donations (Riverton- Jade State News 2017 donation)	\$200.00

Total 2017-18 Income = \$1,340.76

II. EXPENSES

A. Annual Meeting & State Show	
1. Rockhound of the Year (ROY) Engraving	\$60.90
2. Printing copies for Annual Meeting	\$10.50
3. Frames for Club ROY Certificates	\$30.29
4. Board Travel Allowance (\$150/person)	\$450.00
B. Office Supplies:	
1. Postage-Stamps	\$15.00
2. Envelopes-Certificates	\$12.00
C. Government-Organizational Fees:	
1. WY Secretary of State-Annual Incorporation Fee	\$27.00
2. WSMGS Trailer License Plates	\$51.27
3. RMFMS dues & Insurance for 6 Board members	\$12.60
D. Financial Educational Awards:	
1. WY State 4-H State Fair Geology winner	\$50.00
2. Wyoming Museum Award	\$100.00
3. New WSMGS Club Promotional Expenses	\$200.00
E. Educational Programs;	
1. Jade State News-published quarterly	\$300.00
2. WSMGS Website -webmaster gifts	\$100.00
F. RMFMS WY State Director (member of WSMGS board)	
1. Registration Fees for RMFMS Annual Meeting	\$43.00
2. Travel (actual gas expense) + 2 nights Motel (2017)	\$383.20

Total Annual Expenses = \$1,818.76



ANNUAL MEMBERSHIP DUES REPORT**To: Wyoming State Mineral & Gem Society Affiliated “Rock” Clubs****Subject: Annual Membership Dues**

The yearly WSMGS affiliated club membership dues are **\$1.50** per individual club member who is required to pay dues and is 12 years of age or older as of October 31st.

**Please submit your club dues payment to the current WSMGS Treasurer by December 15th:
- Stan Strike-2132 Gail Lane- Cody, WY 82414**

PLEASE COMPLETE THE FOLLOWING FORM AND SEND WITH YOUR DUES PAYMENT

Name of WSMGS Affiliated Club: _____

Club Mailing Address; _____

Club's Organization Date: _____ Date Incorporated with WY Sec. of State _____

Club E-Mail/ Website/ Facebook Address: _____

Meetings:

-Months _____ -Day of Month _____ - Time _____

- Place _____

Identifying Club Membership:

A. Total Individual Dues Paying Members: _____

A1. Adults (18 years and older) _____

A2. Juniors (12-17 years of age) _____

A1 + A2 = _____

Total Dues Paid to WSMGS = (A1 + A2) X (**\$1.50**) = \$ _____ Total paid to WSMGS

B. Pebble Pups (younger than 12 years old) _____

C. Life/Honorary Members _____

D. Total Individual Club Members _____

[A1 + A2 + B + C = D]

Total WSMGS Dues Submitted \$ _____

Date Form mailed to current WSMGS Treasurer _____

Club Officer Submitting Form _____



When Rockhounding - Don't Overlook Fenn's Treasure!

Somewhere in the Rockies, in the roughly 1,000 miles between Santa Fe, New Mexico, and the Canadian border, may be a treasure chest worth millions. The man who claims to have hidden the fortune back in 2010 is Forrest Fenn, now 87, a former Vietnam fighter pilot and art dealer. "No one knows where that treasure chest is but me," The main piece of guidance Fenn has offered is a cryptic 24-line poem he wrote in his self-published memoir, "The Thrill of the Chase." "Read the clues in my poem over and over and study maps of the Rocky Mountains". "Try to marry the two. The treasure is out there waiting for the person who can make all the lines cross in the right spot."

The chest is nearly a square foot in size and weighs 40 pounds when full. It supposedly contains emeralds, rubies, gold coins and diamonds — all artifacts that Fenn, a self-taught archaeologist, amassed during his own explorations and successful business enterprises in the Southwest. "There's 265 American gold eagles and double eagles. There's ancient Middle Eastern gold coins. There's hundreds and hundreds of gold nuggets, two of them as big as [a] hens egg," he said. Fenn originally filled the chest after he was diagnosed with cancer in 1988. He planned to drag it into the mountains to die beside it. After he survived, he left it in a walk-in vault at his house for years, where a couple of witnesses confirmed that they saw it filled to the brim with valuables.

He decided to hide it and launch the hunt years later, during the Great Recession. "Lots of people [were] losing their job, despair was written all over the headlines, and I just wanted to give some people hope." Fenn, 87, claims he hid a treasure — estimated by some to be worth \$2 million -- somewhere in the Rocky Mountains in 2010. His final clues were: "The treasure chest is not under water, nor is it near the Rio Grande River. It is not necessary to move large rocks or climb up or down a steep precipice," he writes. "Please remember that I was about 80 when I made two trips from my vehicle to where I hid the treasure."

Here is the poem with the nine clues from "The Thrill of the Chase," Fenn's self-published autobiography:

1. As I have gone alone in there
And with my treasures bold.
I can keep my secret where,
And hint of riches new and old.
2. Begin it where warm waters halt
and take it in the canyon down,
Not far, but too far to walk.
3. Put in below the home of Brown.
4. From there it's no place for the meek,
The end is drawing ever nigh;
There'll be no paddle up your creek,
Just heavy loads and water high.
5. If you've been wise & found the blaze,
Look quickly down, your quest to cease
But tarry scant with marvel gaze,
Just take the chest and go in peace.
6. So why is it that I must go
And leave my trove for all to seek?
7. The answers I already know
I've done it tired, and now I'm weak
8. So hear me all and listen good,
Your effort will be worth the cold.
9. If you are brave and in the wood
I give you title to the gold.

Happy hunting! Forrest Fenn

Some treasure hunters believe the start of the poem's clues refers to Yellowstone National Park known for its hot springs, mud spots and geysers. "We're going to start where warm waters halt. And for us, that's Madison junction and it's inside Yellowstone National Park. And the reason that it's Madison junction, is because two of the warmest rivers in the park absolutely halt and stop."

When Rockhounding - Don't Overlook Fenn's Treasure!

continued from page 12



So Fenn's treasure could be in Wyoming's own backyard??

So Wyoming Rock Hounds, keep your eyes on the ground and treasures may be found!!

References Utilized:

1. <https://www.cnn.com/2018/04/17/millionaire-forrest-fenn-hid-treasure-in-the-rockies-and-left-a-clue.html>
2. <https://abcnews.go.com/US/people-continue-seek-reported-hidden-treasure-rocky-mountains/story?id=51766060>
3. <https://www.today.com/news/follow-these-9-clues-find-forrest-fenns-treasure-1C8598924>
4. <https://illinoisghost.files.wordpress.com/2016/07/poem2.png>



2018 WSMGS State Rockhound of the Year Nominees

The following individuals were nominated by their respective clubs as Club Rockhounds of the Year and by individual club members using the State Rockhound of the Year form. All of these nominated individuals were eligible to be selected as the 2018 Wyoming State Rockhound of the Year. These Club Rockhounds and the 2018 Wyoming State Rockhound of the Year were recognized at the Wyoming State Mineral and Gem Society's Annual Meeting on June 14th (7:00p.m.) in Marbleton, WY.

Cody Fifty Niners Rock Club

Ian Parsons

Riverton Mineral & Gem Society

Ted Knowles

Shoshone Rock Club

Gary Olson

Sublette County Rock Hounds

Liam Glaze-Junior

Joan Balue

Jim and Leane Gray



2018 WSMGS WYOMING STATE ROCKHOUND OF THE YEAR

Gary was featured in the September 1978 Lapidary Journal article

GARY OLSON HAS A SPECIAL TALENT WITH GEMSTONES

By Sandra E. Guzzo

810 South 12th, Laramie, Wyoming 82070

Reprinted from "Laramie Daily Boomerang," Laramie, Wyoming

PHOTOGRAPHS BY THE AUTHOR

He cuts, grinds and polishes stone which is mounted in jewelry settings, goes rock hunting, demonstrates at rock shows, he is married (and he and his wife have one child), teaches lapidary classes and enjoys life.

Gary Olson of Laramie doesn't let his handicap get in his way. He's been blind since birth. Olson was born prematurely in 1953, was placed in an incubator and because of the excessive oxygen, retinas in both of his eyes were destroyed.

"I have no light and no object perception," he said, unafraid to talk about his blindness. "I accept my blindness. It's a fact of life I live with."

One look at the finely domed and attractive stones, obsidian, black jade, green jade, Mexican agate, bloodstones from India, a Brazilian agate and you soon realize, as one of his friends put it, he has a "talent in those fingers."

"Ever since I was a kid I liked the odd shapes and smooth surfaces of tumbled rocks. When I was eight I met a friend who was blind too and her Dad



Gary Olson uses his lapidary machines to create gems for fine jewelry. He relies on his sense of touch to bring the stone to a fine finish, for Gary Olson is blind.



Examples of Gary Olson's work can be seen in the jewelry above. He works with a variety of stones, but his favorite is Mexican agate because each time you work it, it is different, he says.

used to hunt rocks. He gave me some he had tumbled."

"I started saving for a machine when I was in the eighth grade, then for Christmas my folks got me an outfit which included a saw. Then my math and metal shop teachers in Junior high, realizing my interest, got together with the students in my classes and they made me a larger outfit. There was even a story about that in the paper," Olson recalled.

"In ninth grade I worked on making cabochons (the stone which is later mounted) then I started selling them in high school. My mother worked as a cocktail waitress at Cal's Rest in Cheyenne and she took them there to sell."

Gary came to Laramie a few years ago to attend the University of Wyo-

ming, where he received his B.A. in sociology. Fellow students remember him as a bright student. He was doing graduate work in his field but decided he really liked handling rocks better. "About a year and a half ago I decided to make a business of my hobby," he said.

In one of his anthropology classes, he met a student who was just as interested in rocks and stones as he was. "He and I went on several rock hunting trips. We'd go to Glendo and hunt there."

Olson also teaches lapidary classes in his garage in the summer. "I teach anything that my students are interested in. No one has reacted adversely, when they realize I am blind."

Gary also taught for three summers at Casper Mountain to other blind people. "I find the whole gamut of em-

Gary was featured in the September 1978 Lapidary Journal article continued



Gary Olson, proprietor, stands smiling outside his new rock shop.

tions," he said. "Some feel, 'I'm blind, I can't do anything and the world owes me a living.' For me it's no big deal. I especially see a negative attitude in kids and adolescents. I guess it depends on how you were raised."

"I think my mother had a healthy attitude. She was given all sorts of advice, 'Hold his hand,' and when I began to crawl, 'put a helmet on his head,' and, of course, not to move the furniture around. What my mother did was to accept what she thought was good and throw the rest out. She was a habitual furniture mover," he said smiling.

Watching Gary work at his machines is watching an expert at stone cutting. The diamond blade doesn't cause any problems. "People wonder why I don't cut myself," he said and then gave this reporter a demonstration.

"See this blade," he said holding his finger up to it. "It won't cut your finger — just cause a little friction — but watch out if you hold your fingernail or a rock up to it. Then it will cut."

How does he know which rock he is working with? He only needs to be told once and then he remembers it by its shape. Stones that are already cut

(Continued on Page 1382)



Gary is shown beside a display case containing his finished works.

SEPTEMBER, 1978



Here Gary is grinding a cabochon in his workshop.

into slabs are neatly arranged on shelves with braille labels. He credits his wife Ilene with the arrangement. "Ilene's father was blind so she's used to living with blind people."

Ilene will mark any of the bad spots in a slab and mark the good part with a template. After the stone is cut for a cabochon, Gary will place it on a dop stick with wax (for easier handling) and put it to the grinding wheel, followed by a buffing with various polishing powders. Ilene then mounts the stones Gary makes so they can sell ready made jewelry. "I'll box them for him, but the hard part is his," she said.

In addition to feeling the stone with his fingers, Gary uses his teeth and tongue to check for any scratch marks.

The stones that are hard to handle are jade. "I worked on cabochons for 9 years before I touched jade," Gary said. "In jade the dome is important. If there are any flat spots below the saw marks they can't be polished out. All scratches must be off before I buff it."

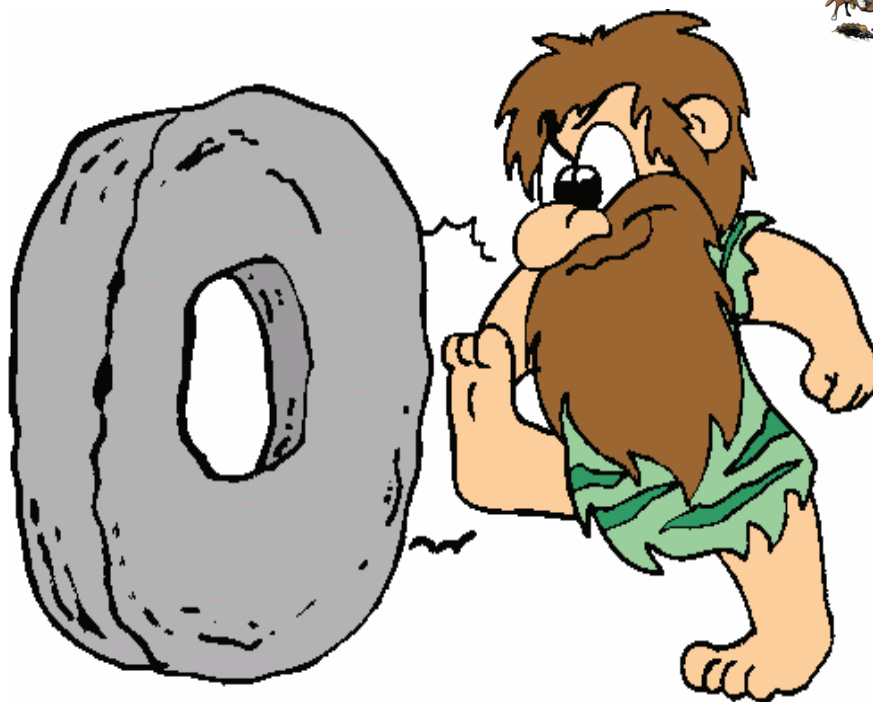
Working from his home has some drawbacks. The Olsons, who live at 819 Hancock, on the corner of 9th, aren't allowed to put a sign up. "My drawback is people don't know I'm here." In addition to his ready-made jewelry, and finished cabochons, Gary will do custom made orders.

Someday he hopes to operate his own shop. "That's what I'd really like to do." In the meantime he would like to find more outlets and feels he can give people a good price.

Gary shouldn't have any problems. The gems shine with radiant colors, are professionally cut, and make extremely attractive jewelry, and whether it's bola ties, bracelets, necklaces, earrings, or belt buckles—it's jewelry anyone would enjoy wearing.

Update

Gary and his wife have opened a rock shop in West Laramie. There he has his display of finished arts in the front part and his lapidary shop and rough rock display in the rear room. Gary's lovely wife, Ilene, will be casting his silver mountings in the near future. They have a tandem bicycle which they ride 2½ miles to the shop and home each day. Their shop is just off of Highway 80 on 130-230 at Fosters Corner.



WSMGS WY STATE ROCKHOUND OF THE YEAR [R.O.Y.] NOMINATION FORM

1. Name of Nominated Person / Couple: Gary Olson

2. Address of Nominated Person / Couple: 980 Springhill Rd, Powell, WY, 82435

3. Nominated Person's / Couple's Current WSMGS Club/ Society Memberships: Shoshone Rock Club

4. Individual's / Couple's Contributions to WSMGS Affiliated Clubs/Societies:

Gary joined SRC in 1993. In 1999 he was club president and one half year in 2000 before he was transferred to Cheyenne for his job of helping visually impaired people. In 2006 he was transferred back to Powell and rejoined the club. Been active ever since and been president since 2016-2018.

As a member of SRC, he makes guests feel welcome at meetings, attends regularly, sharing knowledge about rocks, polishing, cabbing, etc. Assists getting knowledgeable speakers (Such as Larry Fields, of Billings, MT) for programs, and welcomes Cody 59'ers to join us at those special meetings.

5. Individual's / Couple's Contributions to WSMGS: Been a demonstrator at WSMGS state shows, Powell 2010 and Cody 2015

6. State examples that this individual/ couple educates others about the Earth Sciences associated with Rockhounding: He assisted at a program in Powell, for Science Night in 2017 for elementary children, showing rocks, gemstones, etc.

7. State examples that the individual / couple observes & promotes the American Federation of Mineralogical Societies' "Code of Ethics": He appreciates & protects natural resources, but as a visually impaired person, it is difficult for him to be out in the field, so he usually buys his rocks, but does shares his finished lapidary creations with others.

8. Summarize why this individual/ couple is being nominated as WSMGS Rockhound of the Year:

Gary has loved rocks as a very young child. His upbeat attitude, enjoyment of people, and love of stones has made him many admirers. He likes to exemplify, even though you are visually impaired, you can accomplish some goals of sighted persons.



Club Reports

Cheyenne Mineral & Gem Society

Our club picnic is going to be on August 15, 2018, at Orris Wickham's house. Orris' address is 7713 Roundtop Road, which is behind the base. I am including a map to get to Orris' house. We start at 5:30pm and if you can't get there then, get there as soon as you can. Orris is supplying the hamburgers & hot dogs but please bring a side dish/dessert to share, your own plates, utensils, cup etc. The club has paper plates, napkins, S&P etc, but sometimes it is better to have your own stuff. Water is supplied by the club, for anything else-bring your own non-alcoholic drink.

We are going to be doing something special at this year's picnic: **THIS IS A SURPRISE SO PLEASE DO NOT TELL EARL.** We are making Earl Leighan an Honorary Lifetime Member.

Please come and celebrate this special time with Earl and let him know how much we appreciate him. If you have any questions please contact me by e-mail.

The newsletter will be out mid-August. If

you have anything to share, please let us know.

Sincerely, Donna Arnold & Jan Shively

Field trip to Delaney Rim on August 18, 2018 with rain date on August 25, 2018. The trip will start at the Laramie McDonald's, Snowy Range Road, at 7 am and leaving at 7:30 am.

Mark & Donna checked out Delaney Rim on 7/21/18 and found turtella, petrified wood, gypsum and Large concretions/mud balls, see pictures, pictures by Mark Shively. The concretions found were broken and about 18+ inches across, we are hoping to find whole concretions.

Delaney Rim is south of Wamsutter, WY and there aren't any facilities whatsoever. Make sure you are fueled up, bring lots of water, food, trash bags to take out what you bring in.

If we have to do a raincheck we will send out an e-mail as soon as we know

Jan Shively



Club Reports continued from page 17

Cody 59ers Rock Club

My thanks, again, to all of you who attended tonight's meeting! It was entertaining, informative, and productive! Here's a little recap on some of the meeting.

Congratulations to the Rock Raffle winners! In case you didn't make it to the meeting, the winners, in order, were, Rod Kindel, Debbie Severide, and Audrey Smith. (I hope I got that right, I should have written down the names..) Roger will let us know how much cash the Raffle generated for the club.

Plans are being made for our trip to Kemmerer for Green River Fish Fossils. We are booked with Dean Sherman/In Stone Fossils for Sunday, August 26th, for the group rate of \$75 per person. Also, members may want to consider going to a second quarry while in the area. If so, check out American Fossils and fishdig.com Personally, I think I will make the drive down on Friday, visit Fossil Butte, then on Saturday go to the American Fossils quarry, and on Sunday go to In Stone Fossils' quarry. I think that makes the most of the trip down, stopping in Farson for ice cream both ways, no doubt! I plan to reserve my hotel room

soon.

The Bylaw Review and Revision Committee reported on their findings and progress, and were able to explain why they feel the need to expand the revision to the Articles of Incorporation. Thank you to the committee for the hours and effort they have put into this so far, with more to come. Also, thanks to members who asked questions and expressed concerns. It helped us all get a better understanding of what is being accomplished.

Thanks to Ned Kelly for sharing his wonderful photos and stories of his "catch and release" rock-hounding in Yellowstone National Park, and also to Larry Olivera for providing the use of his cool little projector!

Please contact me with any thoughts or ideas you'd like to share about topics from the meeting. I hope to hear more feedback on the field trips mentioned, the club display case, and program ideas.

See you all in a month, if not before!
Nella



Club Reports continued from page 18

Cody 59ers Rock Club continued

Friday June 1 field trip to 'Paton Hole' on Bear Creek road in Shell WY:

Meet at old airport parking lot at 8:45 to sign liability forms and arrange car pooling. Probably about an hour & 45min out to site from there. What you may find: flint nodules, agate, 'gizzard stones', sandstone conglomerate ('Indian ashtrays'), beautiful badlands scenery, sometimes raptor nesting in the cliffs. Be aware that this area can be hot & dry even early in the summer so make sure you wear hats & bring plenty of water. The Bear Creek road is dirt but well maintained & doesn't require high clearance vehicles. However it is not a good drive in wet weather (nor is collecting area due to bentonite & gumbo) so plan on June 2 as rain date if Friday is not good weather.

For those of you who have not been to the Shell BLM dino track site, you will pass the turnoff to it on your way to our collecting site. So save time on your way home to go see it! (My cousin Erik, aunt Row, & uncle Cliff discovered these tracks & worked tirelessly with the BLM over many years to get it developed into the great site that it is now).

Let me know if you need any more info on this. Thanks, Shea

Finally, a chance to get out for another field trip July 21st. The area is listed in the booklet from Ava's Rock Shop called 10 Great Wyoming Collecting Areas and is called the Wild Horse Pasture. In the description, things to find are "agates and spectacular fossil wood." The area is 25 miles north of Hwy 431, along the Platte Pipeline Road. To reach the area, we drive south of Meeteetse to Hwy 431, where we head east until we get to the Platte Pipeline Rd, then turn north. That will be a dirt road, that was decent to drive on last summer in dry weather, but typical washboard in spots and dusty. Stopping along the Platte Pipeline Road last summer, I found chalcedony, jasper, and other miscellaneous rocks, but didn't go far enough to reach the "spectacular fossil wood."

We will meet at the old Cody airport terminal parking lot at 7:45 and we will leave from there at 8am. Please arrive early enough to sign the release form. You must be a club member to participate in the field trip, but you may join when we meet on Saturday morning, if you are not already a member.

Plan on a 2-3 hour drive each way, so a full tank of gas is a good idea. Bring plenty of water, and lunch/snacks. Prepare for hot weather with hat and sunscreen. There will not be shade. Rattlesnakes are always a possibility. Dress appropriately for our summer Wyoming conditions!

Looking forward to seeing you on Saturday! Let me know if you plan to join the trip, please. Nella



**KIDS FIND
MORE ROCKS
BECAUSE
THEY ARE
CLOSER TO
THE GROUND**
(and have better eyesight)

Club Reports continued from page 19

Shoshone Rock Club News

May 2018

The Shoshone Rock Club met on May 8, 2017, at the Powell Branch Library. The meeting was called to order at 7:02 p.m. by President Gary Olson, with 17 people present, including one guest and two new members.

The meeting consisted of silent auctions of two rock and fossil collections — one owned by Ruth Warye and the second belonging to Margaret Straub. Both women generously agreed to donate 50 percent of the proceeds to the Shoshone Rock Club's treasury. Each auction session featured wonderful specimens, and club members bid enthusiastically after scouting to see what minerals, fossils or rocks were placed on the table for each round. Several display cases also were auctioned off.

Linna Beebe announced that board members would meet later in May to assemble the club's showcase entry for the Wyoming Gem and Mineral Show, to be held in June in Marbleton, Wyoming. They also would fill grab bags for the rock show.

Hosts for the evening were Dorine Strom and Cresta Peterson, with both providing refreshments.

June 2018

The club met on May 12 for a program by Cliff Manuel of Geoscience Adventures from Shell, Wyoming, "Ancient Life in the Big Horn Basin."

The Big Horn Basin Geoscience Center in Greybull has a 40-foot-long mural painted by Powell artist Mike Kopriva, as well as casts of dinosaur tracks, rocks, fossils, the skull of Big Al #2, ammonites and more. The Big Horn Basin area is world famous for dinosaur discoveries, dinosaur egg shells, track sites, ancient plants, mammal fossils and more. Some dinosaur quarries located in the area include the Howe quarry near Shell, where two allosauruses were found; Red canyon

Ranch in Thermopolis, where the most complete Stegosaurus was found; the Dana Quarry, near Ten Sleep, where two complete diplodocus were found; and the AMNH Quarry (American Museum of Natural History) near Hyattville, where recent discoveries have been made.

Most dinosaur quarries are in the Morrison Formation. Barnum Brown excavated the Howe Quarry, which was on property owned by Barker Howe. Brown uncovered the first T Rex there. Cliff said the museum is open Wednesday through Saturday, but suggested giving them a call before visiting to see if he is in, for a possible tour of the track sites.

Sheri Vredenburg and Cindy Boles provided the refreshments. Stan Strike, an officer of the Wyoming State Gem and Mineral Society, presented to Club President Gary Olson a certificate for being the Shoshone Rock Club Rockhound of the Year. Stan then gave a surprise early presentation for the Wyoming state Rockhound of the Year, which also went to Olson. Stan said he knew Gary could not attend the presentation at the Wyoming State Gem and Mineral Show later in the month, but he wanted to get a photo of Gary with the award, so he presented it early. Gary was much honored by receiving the reward.

During the business meeting, Club Treasurer Linda Thomas notified board members that the silent auctions in May brought in donations totaling \$348.75 from Margaret Straub and Ruth Warye, whose collections were auctioned.

Mary Ann Northrup brought in a book, "Ancient Wyoming" by Kirk Johnson, about geology of the Bighorn Basin. The board agreed to purchase the book for the club. The board also approved a \$55 donation to the Homesteader Museum in Powell.

Dorine Strom and Linda Dandy volunteered to be the club's delegates at the annual meeting in Marbleton, Wyoming, on June 15-17.

Club Reports continued from page 20

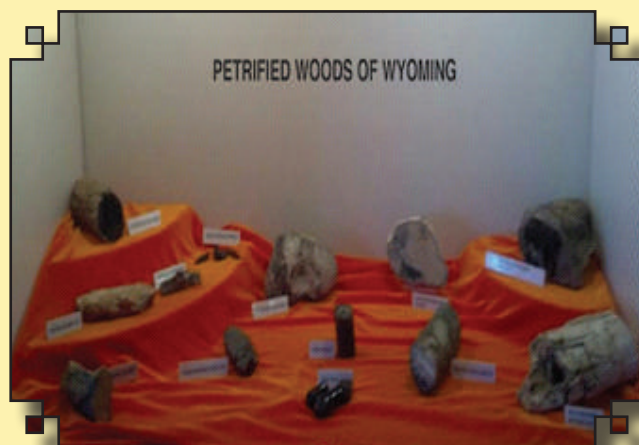
Shoshone Rock Club News continued

July 2018

The Shoshone Rock Club had a picnic and field trip to Hunt Mountain on July 14, with nine people attending. Two kids who came along for the fun found sunflower coral and horn coral. Club member Dorine Strom gave a report about the Wyoming State Gem and Mineral Show in Marbleton in June. Dorine and Linda Dandy

served as the club's delegates at the annual show.

They took the Shoshone Rock Club's showcase with them, and Dorine reported that the club won second place for its display. Two field trips took place during the state rock show, one in search of Blue Forest petrified wood and the other for stromatolites.



Sublette County Rock Hounds Club

July 28, 2018

Jim Gray called the meeting to order at 9:05am, at the Marbleton Town Hall parking lot in Marbleton. There were 33 in attendance. Everyone should have received the minutes from the June meeting by e-mail, mail, or in person.

Welcome new members, glad to have you with us today.

Old Business:

A big thank you to all of the members of the Sublette County Rock Hounds for contributing to the success of the gem & mineral show in June – those who actively helped, those who provided behind-the-scenes assistance and moral support, and those who have paid dues that provided the financial means to offer this show to our communities. Jim presented a review of the 2018 show. The silent auction, grab bags, and painted rock

went really well. The gem and mineral shows in areas around us in did not have painted rock activities.

Jim presented some topics for the Club to consider in anticipation of the 2019 gem & mineral show. The Sublette County Fairgrounds has put the Show on their calendar for the Events Center (rather than the smaller Commercial Building).

Those members at this meeting agreed that the Events Center building is by far better than the Commercial building so we can spread out and enjoy the kid's activities and exhibits. The 2019 show will be June 14, 15, 16; and future years will be the same middle weekend of June. Additional topics to be thinking about were collecting rock for the silent auction, polishing rock for grab bags, painting rocks for the Paint the Rock table and display, collecting unique rocks for the Paint

Club Reports continued from page 21

Sublette County Rock Hounds Club continued

the Rock table, and building 12 to 15 display cases. Jim brought a borrowed exhibit case back from the Natrona County Rock Hounds for a pattern. This case complies with the Rocky Mountain Federation of Mineralogical Societies specifications and it includes a box into which fit all of the pieces for transport and storage. Our Club will pay for the materials and Club members will do the construction; please let Jim know if this is a project in which you would like to participate so a group can be assembled to complete these cases by May 2019.

Jim suggested the Club have committees for each of the components of the 2019 show such as signs, vendors, kid's activities, etc. So the work load can be distributed among the membership and more of the members can learn what goes into the preparations for a successful show.

We need a theme for the 2019 Show, please e-mail suggestions to Jim to present at a future meeting for a Club vote.

The 4th of July Parade in Big Piney went well; several members rode on Jim's 1934 Ford truck and threw out candy. See Facebook for pictures. Membership renewal month has been June and most members have renewed. All who have not renewed by July 31, will be purged from the membership roster and e-mail list. However, anyone can renew or sign up at anytime during the year. If members who renewed or signed up did not get two Club logo stickers, please let Jim know; it has been easy to forget to hand these out!

Joan Balue recommended placing a logo sticker at the top left of the rear window of your vehicle(s) that you drive on field trips to make spotting fellow members during field trips.

New Business:

Field trips were discussed. We need field trip leaders, please contact Jim or Roger to volunteer and schedule for the remainder of this year and for next year.

DO WE WANT TO MAKE A CLUB TRIP

TO COLLECT FOSSIL FISH IN KEMMERER IN SEPTEMBER OF THIS YEAR? If so, please e-mail Jim to put your name on the list. We need enough members to participate to make this a worthwhile Club trip. A trip to Topaz Mountain is tentatively planned for spring 2019.

Treasurer Report:

a. Beginning Balance	\$ 5805.79
b. Silent Auction, June	\$ 37.00
c. Door Prize, June, donated by JL Gray Rock Shop	\$ 40.00
d. Memberships, new & renew	\$ 550.00
e. Donations	\$ 110.00
f. T-shirts, paid for	\$ 57.00
g. Deposit from Show	\$ 4018.00
h. Ending Balance	\$ 10,617.79

A review of the revenues and expenses for the Show occurred, 20% of the profit for the show is to go to the Wyoming State Mineral and Gem Society. This amount is \$932.78. Joan Balue made a motion to pay WSMGS the amount of \$932.78; Dianne Vitt seconded. Motion was voted upon and carried. Jim has the accounting of the show including the details of the proceeds of each raffle and if you want to see it, let him know.

Jim briefly listed the components of the RM-FMS Show including a breakfast, a dinner, and meetings. Additionally, RMFMS conducts the judging of the competitive showcases. More discussion about the RMFMS show will occur in future meetings as we begin to look toward the 2020 show.

The next meeting of the Sublette County Rock Hounds will be August 18, at the picnic shelter in the Marbleton Town Park on East 1st street in Marbleton, beginning at Noon. Please e-mail Jim with what you will bring to the potluck. The Club will purchase the burger, bratwurst, and hot dogs for the meal.

Respectfully submitted,
President, Jim Gray, Secretary, Deb Jess
Vice President, Mike Schaffer
Treasurer, Leane Gray



WSMGS CLUBS

Information subject to change; updates will be posted upon notice. Contact the Editor with changes at: jsn@wsmsg.org

Cody Fifty-Niners Rock Club

P.O. Box 1251
Cody WY 82414

cody59ers@wsmsg.org
www.Cody59ers.com

Meets 4th Thursday 7:00 p.m. Park
County Courthouse, Cody

President: Nella Flurkey
Vice-President: Teresa Rowan
Treasurer: Roger Lyons
Secretary: Linda Jennings
JSN: Linda Jennings
Historian: Jackie Platt



Shoshone Rock Club

P.O. Box 256,
Powell, WY 82435

shoshonerockclub@wsmsg.org

Meets 2nd Tuesday 7:30 p.m.
Powell Library,
317 E. 3rd Street, Powell

President: Gary Olson
Vice-President: Mary Vogel
Treasurer: Linna Thomas
Secretary: Linda Dandy
Secretary Asst, NOB: Linna Beebe
JSN: Ilene Olson
Historian: Linna Beebe
Field Trips Dorine Strom



Cheyenne Mineral & Gem Society

P.O. Box 21412
Cheyenne, WY 82001

cheyennemgs@wsmsg.org

Meets Sept. – May 2nd
Wednesday 7:00 p.m.
LCCC Health Science Bldg., 1400 E.
College Dr., Room 309, Cheyenne

President: Donna Arnold
Treasurer: Jan Shively

Natrona County Rockhounds

P.O. Box 123,
Casper, WY 82644

natronarockhounds@wsmsg.org

Meets 1st Monday 7:00 p.m.
Clubhouse, 5211 Rambler, Mills

President: Mac Goss
Vice-President: John Hine
Treasurer: Kenny Platte
Secretary: Mac Goss



Rex Young Rock Club

112 East 3rd
Lingle, WY 82223

rexyoungrockclub@wsmsg.org

Meets 2nd Wednesday 7:00 p.m.
Senior Center
216 E. 19th, Torrington

President: Kim Nielsen
Vice-President: Sherman Lenhart
Treasurer: Leroy Meiniger
Secretary: Joyce Trowbridge
JSN: Joyce Trowbridge
Historian: Joyce Trowbridge



Riverton Mineral & Gem Society

P.O. Box 1904,
Riverton, WY 82501

rivertonmgs@wsmsg.org
www.RivertonMGS.com

Meets Sept.–May 2nd
Monday 7:00 p.m.
303 E. Lincoln, Riverton

President: Rod Baltes
Vice-President: Rob Currier
Treasurer: Melvin Gustin
Secretary: Kim Brown

Sublette County Rock Hounds Club

P.O. Box 1351 Big Piney, WY 83113

subletterockhounds@wsmsg.org

Meets 3rd Saturday 1:00pm
The Bench Grill,
415 Winkleman, Marbleton, WY

President: Jim Gray
Vice-President: Mike Schaffer
Treasurer: Deb Jess
Secretary: Leane Gray

